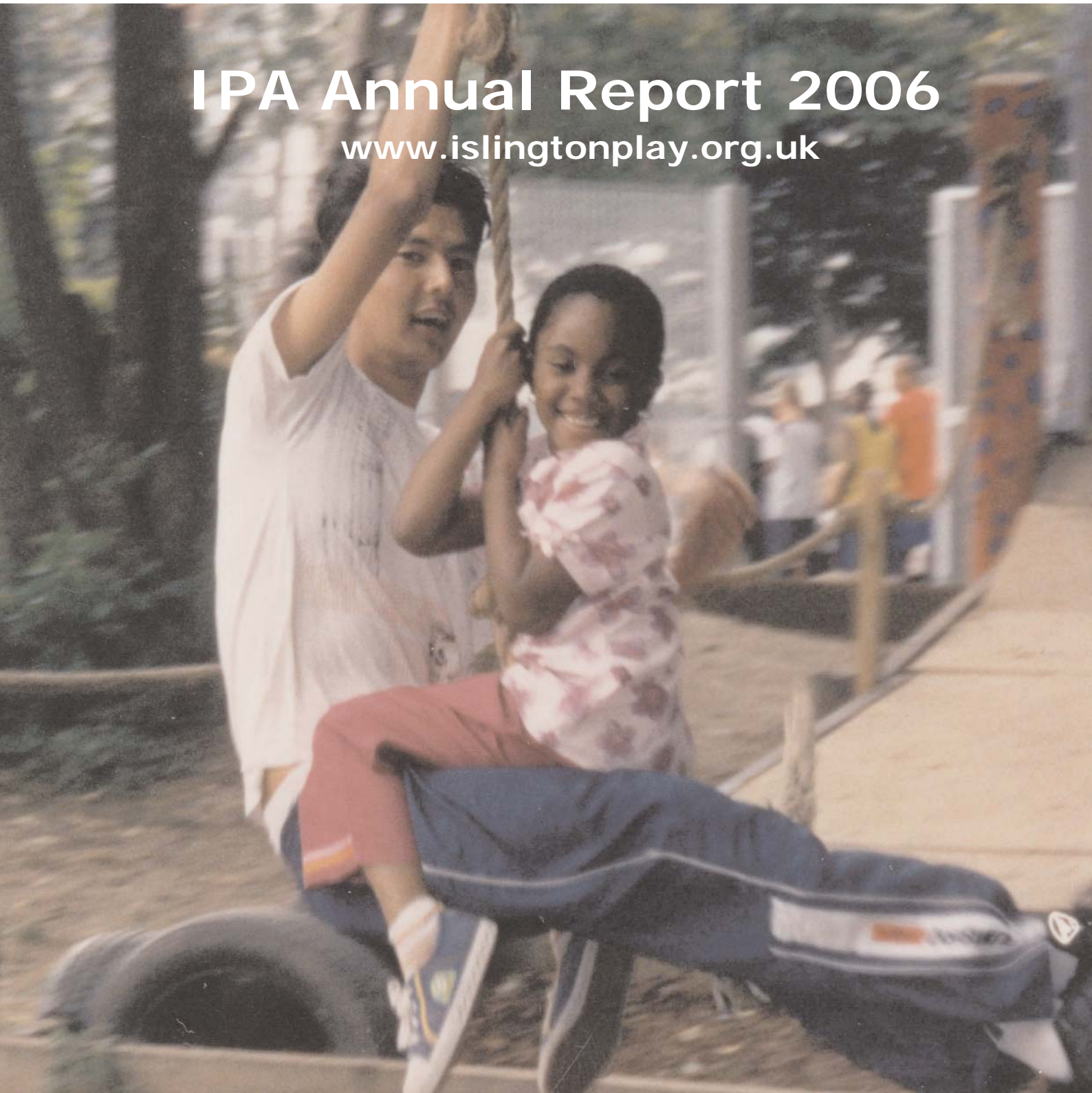


# IPA Annual Report 2006

[www.islingtonplay.org.uk](http://www.islingtonplay.org.uk)





## Introduction

The aims of the Islington Play Association (IPA) are to promote play opportunities and play facilities for all children in the London Borough of Islington. To achieve these objectives the IPA promotes awareness of the importance of children's play, provides support to Islington's voluntary sector children's play, youth and childcare services, assists in the provision of training, helps groups consult, plan and design services, fundraise and recruit staff. Model services are managed to provide 'benchmarks' of quality with an emphasis on ensuring a focus on freely chosen self-directed play.

The IPA works with all who share the Association's core values and objectives.

Over the last year the IPA, working with London Play, was commissioned to research and draft a play policy for the EC1 New Deal for Communities. The IPA has continued to contribute wherever possible to the work of rolling out the new 'play lottery' programme. Over the year, there has been a considerable expansion in the number of volunteers either working directly for IPA or being placed by the IPA in play and youth projects across Islington. One of these volunteers has redesigned the IPA website, which is now the main tool for recruiting volunteers and voluntary donations.

The IPA continues to work closely with its partners to raise awareness of the benefits of play and continues to prioritise open access, free at point of use play on adventure playgrounds. This work is made possible by imaginative collaborations, a coherent fundraising strategy and an underpinning by commissioned work in Islington and elsewhere. The provision of model services will not only contribute to raising expectations of quality of provision but will also offer the buildings (offices, storage, meeting and training spaces) and contribute to the sustainability of the organisation making a cost efficient and professional administration possible, which is difficult to maintain from only serial time-limited funding. The social enterprise under 5s childcare and early education services will be converted into commissioned services (fees and expenditure tied into a Borough wide system providing more financial stability).



## **Direct Services**

The Priory Heights Centre continues to be a focal point for children's play and family services in the Kings Cross area of Islington. Furthermore it is an important resource for local schools developing their 'extended school' services. It, uniquely for Islington, provides a purpose built location for an after school club and holiday play schemes. Linked to these services, parenting skills classes are provided, healthy eating programmes and close work with the Anti Social Behaviour Team. The provision is of the highest quality and while providing services to many socially excluded families it is also in demand by parents across Islington looking for the best out of school childcare services. The Islington Childcare Trust plans to use the centre for 'first rung' training and access courses and has installed a new under-8s crèche room and a baby room.

The IPA nursery has relocated into the newly built Paradise Park Children's Centre. The Centre is being developed in partnership with Hillmarton Sure Start, the London Borough of Islington's Early Years Service and its parks department, Islington Greenspace. From April 2007 the IPA will be taking the lead role in providing Children Centre services under a long term Service Level Agreement. The nursery will convert from a social enterprise into an integral part of a Borough wide early education and childcare service based in a Children's Centres. The Centre will include a public café and public supervised play spaces open at weekends for younger children and their parents/carers. The IPA's vision is that the Centre will form part of an overall development plan for Paradise Park that will co-ordinate the work of the children's farm and MLK Adventure Playground. There will be a fixed public playground with water features and youth activities providing a model for the improvement of urban open spaces.



## **Adventure Playgrounds**

In March, the IPA completed the first year of its three-year 'Active Kids' project. Significantly, this work is funded by Sport England, a national sports body that recognises the centrality of play to children's overall fitness and health.

The project's objectives are :

- \* The measuring of physical activity levels
- \* Modifying the playgrounds' environment to increase numbers of children and levels of physical activity
- \* Involving playworkers, volunteers and children in the changes to the playground
- \* Working with playworkers to improve professional practice and exchange skills and ideas

By the end of March, the IPA project workers Bob Hughes and Max Mueller had been working with five of the twelve Islington Playgrounds.

Levels of physical activity were measured using methods such as analysing video footage of children's play, scoring physical activities such as running, climbing, jumping or digging.

Other factors that were considered included ages and abilities of the children, patterns of playground use and the 'novelty factor' of new play features. Modifications included new structures such as rope bridges, climbing frames, swings, zip wires, a firefighter's pole and a tightrope. Working in partnership with the charity Community Service Volunteers, over 500 hours of voluntary work were expended. In order to improve playwork practice, IPA playground development staff organised a series of six seminars to address theoretical and practical aspects of play work. The seminars were attended by play workers, play trainers and play service managers from all over London.

The IPA also continues to provide general help to voluntary sector playgrounds. Support has been provided around staff and management committee recruitment, volunteers, quality assurance, budgeting and financial management.





## **Quality and Playcare**

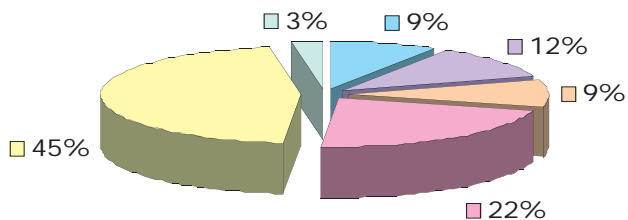
The IPA has a thirty year history of supporting community holiday play schemes and now extends this support to voluntary sector after school clubs. Because play workers now need to be qualified and suitably experienced, and provision is subject to Ofsted inspection and registration, schemes that only run in the school holidays are rare. Permanent workers are required and so most provision is year-round and managed by medium sized well established voluntary organisations. Local public funding for holiday play schemes has also almost disappeared and therefore support for small community based play schemes is a priority. These are most likely to provide schemes that are affordable to socially excluded families and wage-less households for whom the childcare 'market' and childcare tax credits are irrelevant. The IPA has produced an organiser's "Tool-kit" in both hard copy and electronic form that assists all providers, including the holiday only community schemes to fully meet Ofsted standards. A copy of the tool kit has been given to every provider in the Borough. Assistance is also given with fundraising, insurance, staff recruitment and volunteer recruitment. Contact Jo Barker for more information and copies of the toolkit.

## **Communities that Care**

The Children's Fund funding for the Communities that Care (CtC) Project finished in March 2006. This CtC community forums' work in both the Hillmarton and Copenhagen areas contributed effectively to promoting neighbourhood preventative work with children and young people. The IPA continues to support Antonia's Benedek's work as development coordinator for voluntary sector play and youth providers in the Copenhagen area by providing an office and facilities, while her salary is paid by the Copenhagen Youth Project. Antonia's work includes vital support for Crumbles Castle Adventure Playground.

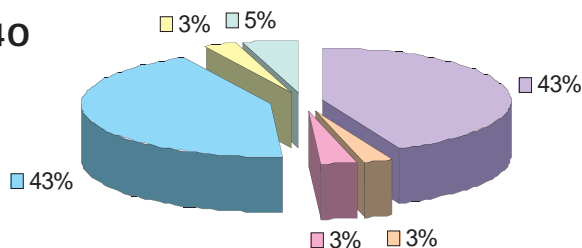
## Financial Information

### INCOME £1,017,921



Islington Council £87,839	Nursery & Priory Heights Fees £117,134
Government Funded Development Agencies £87,680	Charitable Trusts and Donations £231,736
Paradise Park Building Grants £467,336	Service Charges, Consultancy & Bank Interest £26,196

### EXPENDITURE £1,075,140



Staffing £466,136	Resourcing Priory Heights £27,730
Resourcing Paradise Park Nursery £31,876	Resourcing Paradise Park Children's Centre £467,336
Management & Administration £32,067	Other Projects £49,995

Difference matched by resources carried forward.

Full accounts are available on request

Auditor: Connor Warin, Trinity House, Foxes Parade, Waltham Abbey, EN9 1PH

Bankers: Barclays Bank, the Co-operative Bank and the COIF Charities Deposit Fund

The IPA is a registered charity number 1086165 and a not for profit limited company number 3989283



## Funders and Partners

29th May 1961 Charitable Trust  
 Armourers Charitable Trust  
 BBC Children in Need  
 Better Play  
 The Big Lottery Fund  
 Bridge House Trust  
 Elfedia Rathbone Charitable Trust  
 Holloway Neighbourhood Centre  
 Islington Childcare Trust  
 Islington Children's Fund  
 Islington EYDCP  
 London Borough of Islington  
 London Development Agency  
 Mercers Charitable Trust  
 Neighbourhood Nurseries Initiative  
 Priory Green Parents Group  
 Slaughter & May Charitable Trust  
 Sport England  
 Sure Start Hillmarton

## Staff

Director - Steve Macarthur  
 Finance Manager - Gary Ewer

Active Kids Programme Managers -  
 Bob Hughes, Max Mueller  
 Parent Support Manager - Julie Roberts  
 Play Development Worker - Jo Barker

CtC Co-ordinator - Antonia Benedek

Priory Heights Centre Staff  
 Senior Playworker - Terri Skerratt  
 Playworker - Gareth Haddow  
 Playworker - Teneson Whyne  
 Playworker - Chris Skerratt  
 Young Helpers - Dean Skerratt, Jemma  
 Parkin  
 Support Staff: Annie Stubbs, Ruth Gyles

Paradise Park Nursery Staff  
 Nursery Manager - Maria Mott  
 Deputy - Vivienne Thompson  
 Nursery Teacher - Claire Owen  
 Nursery Practitioners and support staff  
 Jermaine Payne, Virginia Beckles,  
 Louise Jeffrey, Fatima Bahmani,  
 Shakhera Akhtar, Stacey Jeakins,  
 Patricia Okwan

Cleaners - Virginia Beckles, Vanessa Beckles

Volunteers: Anna Maria Mitsinga, Jairzinho  
 Bell, Dwight Semple, Philomena, Colin  
 Skerratt, Chris Archer,

**Head Office:**  
**West Library, Bridgeman Road**  
**London, N1 1BD**  
**Tel: 020 7607 9637**  
**Fax: 020 7607 9638**  
**Email: [info@islingtonplay.org.uk](mailto:info@islingtonplay.org.uk)**

**Paradise Park Children's Centre and  
Nursery:**  
**164 Mackenzie Road**  
**London, N7 8SE**  
**Tel: 020 7697 7344/7341**  
**Email:**  
**[paradisepark@islingtonplay.org.uk](mailto:paradisepark@islingtonplay.org.uk)**

**Priory Heights After School and  
Holiday Club:**  
**Priory Green Estate, Wynford Road**  
**London, N1 9QY**  
**Tel: 020 7713 7366**  
**Email:**  
**[info@islingtonplay.org.uk](mailto:info@islingtonplay.org.uk)**

### **Management Committee**

Kassandra Liburd: Chair

Alan Sutton: Vice Chair

Dee Brecker: Treasurer

Jonah Grunsell:  
Secretary

Charlie Bowker: Trustee

Luisa Chagas: Trustee

Elvira Eilert: Trustee

Lucia Garratt: Trustee

Anita Grant: Trustee

Dawn Jennings: Trustee

Paul Kilham: Trustee